

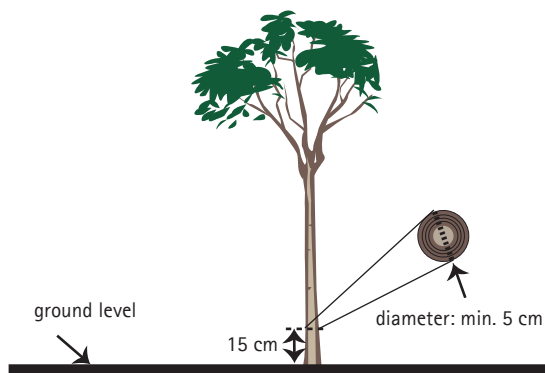
Trees

Cutting Down a Tree

Within its Plan fraîcheur (coolness plan), the Borough of Saint-Laurent has adopted regulations on planting, protecting and cutting down private trees, thereby helping to preserve the estimated 112,000 trees in its tree heritage, to increase greening throughout its territory and to mitigate heat islands.

A certificate of authorization must be obtained from the Borough before cutting down any tree located on private property and having a trunk 5 cm in diameter or more measured at a height of 15 cm from the ground or at a height of 1.4 meters from the ground (figure 1).

Figure 1 : Dimensions when cutting down a tree



IMPORTANT NOTE

The following actions are considered to be a tree-cutting operation:

- Removing over 50% of the living foliage.
- Severing—by pulling out or cutting—over 40% of the root system.
- Covering the root system with 20 cm or more backfill.
- All other actions resulting in the elimination of the tree (use of a toxic product, making incisions around the trunk, etc.).

Procedure

To submit an application for a certificate of authorization, the *Application for certificate of authorization to cut tree(s)* must be filled out and enclosed with the other required documents. These documents must be submitted to the *Division des permis et des inspections*, 777, boulevard Marcel-Laurin.

Costs

There is no charge for processing the application.

Hazardous tree

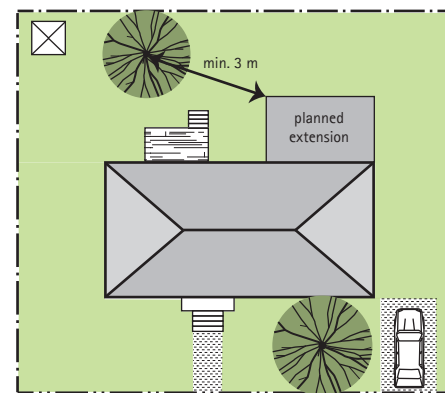
The Borough may require owners to prune, trim or cut down their tree if it is a hazard to public safety, if it interferes with the use or maintenance of the public roadway or if it is detrimental to the health of trees in the surrounding area.

Tree-cutting authorization cases

A tree located on private property may be cut down only in one of the following cases :

- The tree is dead or irreversibly withering away—that is, over 50% of its crown consists of dead wood.
- The tree is located within a planned construction site or less than 3 metres from that site or from a planned retaining wall. A sign is not considered to be construction (figure 2).
- The tree is located within the site of a pool, an accessory parking space, an accessory building, an access way or roadway for motor vehicles or an excavation area for a public utility. In such a case, a certificate of authorization will be issued only if no other space is available for such facilities elsewhere on the grounds.
- The tree risks spreading a disease or an exotic invasive species, such as the emerald ash borer.
- The tree is irreversibly diseased, has a structural deficiency affecting its solidity or is causing serious damage to property. This must be confirmed with an assessment made by a competent authority specializing in arboriculture or on the basis of a study by an arboriculture specialist.

Figure 2 : Distance from construction



The following situations are not considered to be a nuisance related to the presence of a tree and do not constitute serious harm:

- Falling twigs, leaves, flowers or fruits
- The presence of roots at the surface of the ground
- The presence of insects or animals
- Shade
- Bad odours
- Sap or honeydew exudate
- Pollen shedding



Trees Cutting Down a Tree

Replacement of a tree that has been cut down (figure 3)

A tree that has been cut down must be replaced by the owner with a new tree. In such case, the following conditions must be met:

- The new tree, when planted, must have the following characteristics:

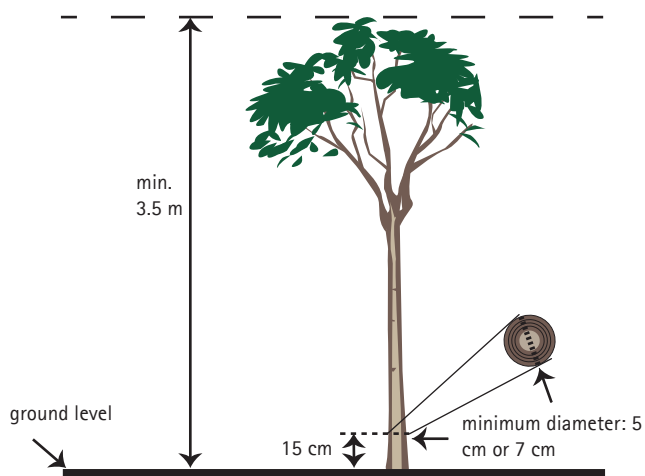
Leafy tree

- Have a minimum height of 3.5 metres, measured from its base, up to its highest point.
- Have a trunk whose diameter is at least 5 cm measured at a height of 15 cm from the ground for properties having a residential building within use class h1 (1 dwelling), h2 (2-unit dwelling) or h3 (3-unit dwelling).
- Have a trunk with a minimum diameter of 7 cm, measured at a height of 15 cm from the ground, for properties having a building in use class h4 (dwelling with 5 housing units or more) or in use group "retail business", "service business" or "industrial firm".

Evergreen tree

- Have a minimum height of 1.75 m, measured from its base, up to its highest point.
- The tree must be planted within 6 months from the issuance of the certificate of authorization for tree-cutting.
- At maturity, the new tree must develop a canopy equal to or greater than that of the tree to be cut down. In a case where the property does not allow for planting a tree having the same canopy, the Borough may authorize the planting of more than one tree with a smaller canopy to replace the one to be cut down.

Figure 3 : Minimum dimensions of a tree when planted



Information: 311 - ville.montreal.qc.ca/saint-laurent/factsheets

Legal framework: Règlement sur le zonage no RCA08-08-0001

Please note: Certain specific conditions not mentioned herein may apply. This information has been prepared for the reader's convenience and has no official value. No guarantees are offered with regard to the accuracy of the text. For all legal purposes, the reader will have to consult the official version of the bylaw and each of its amendments.